

2400 S.W. 145th Ave. Miramar, FL 33027

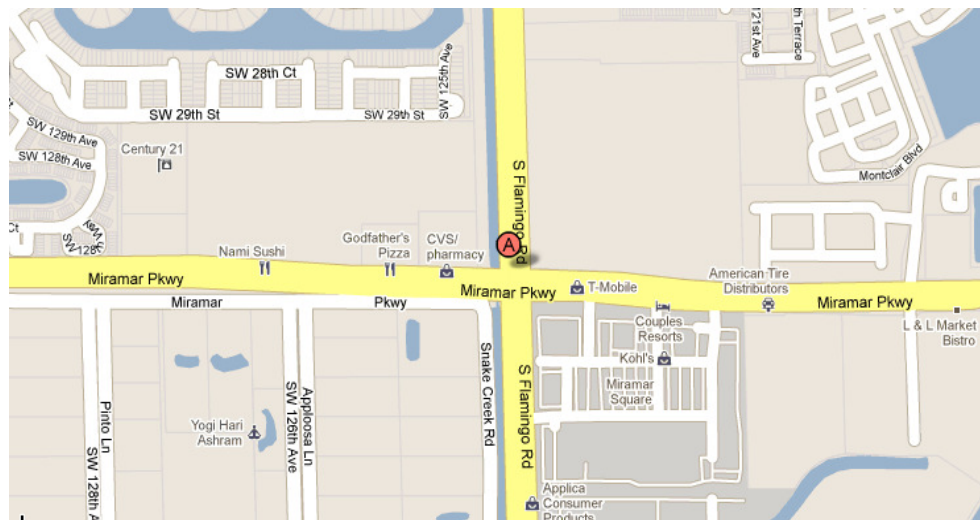


Space Features

- **SIZE:** 2,570 SF—1st Floor
3,959 SF—1st Floor
29,384 SF—4th Floor
- **TERM:** June 30, 2016
(shorter term possible)
- **RATE:** \$28.00/SF, Full Service

BUILDING FEATURES

- **BUILDING SIZE:** 228,755 SF
- **YEAR BUILT:** 2001
- **SECURITY:** On-site 24/7
- **POWER:** 480 V, 3000 amps, 3 Phase
- **ENERGY STAR:** 97% Rating
- **SPRINKLER:** 100% wet sprinkler system
- **PARKING:** 4:1,000 ratio



For more information:

Ken Morris, SIOR
Morris SE Group
954.474.1776 ext. 303
954.240.4400 Mobile
kenmorris@morrissegroup.com

Lois Paskow, RPA
Morris SE Group
954.292.3232 Mobile
loispaskow@morrissegroup.com

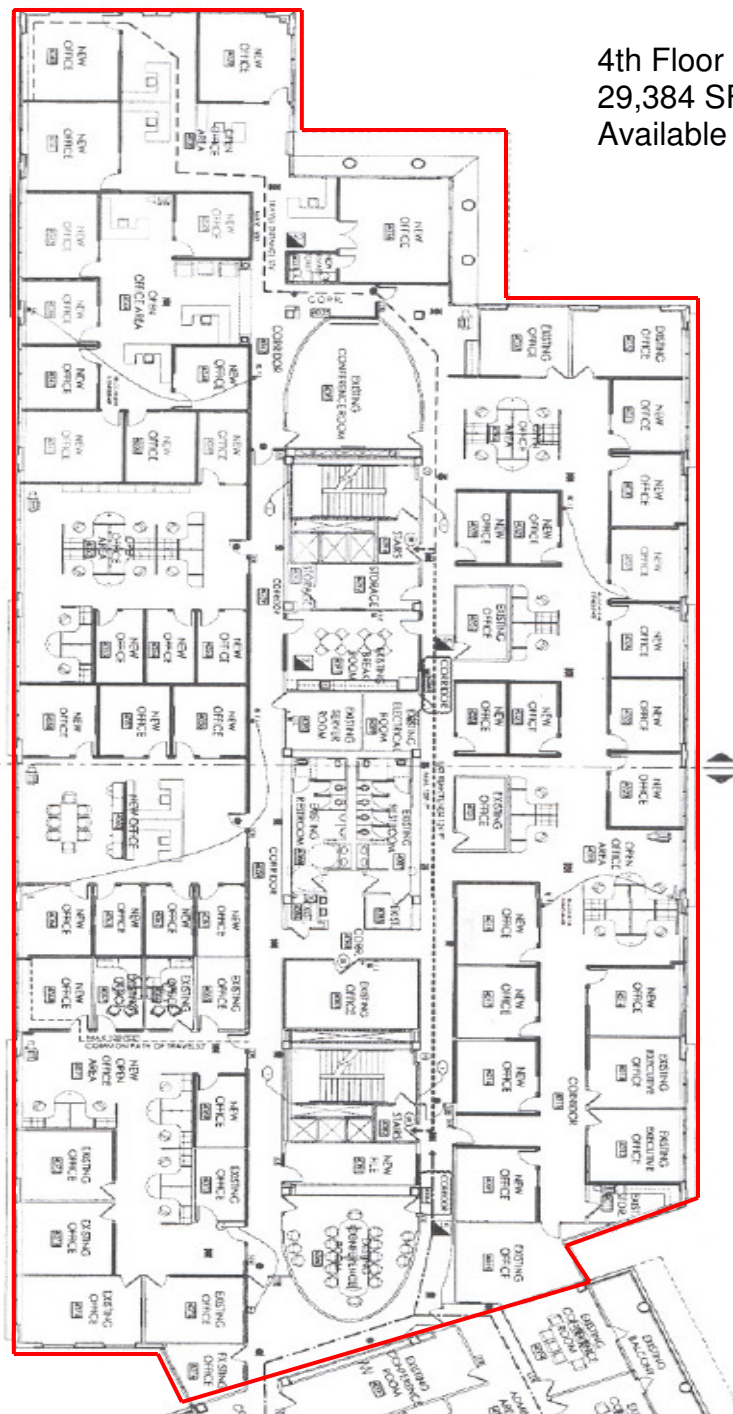
Koree Rivers
Morris SE Group
954.815.0878 Mobile
koreerivers@morrissegroup.com

Sharon Weber
UGL Services
404.504.5848
sharon.weber@na.ugllimited.com



2400 S.W. 145th Ave.
Miramar, FL 33027

4th Floor
29,384 SF
Available



For more information:

Ken Morris, SIOR
Morris SE Group
954.474.1776 ext. 303
954.240.4400 Mobile
kenmorris@morrissegroup.com

Lois Paskow, RPA
Morris SE Group
954.292.3232 Mobile
loispaskow@morrissegroup.com

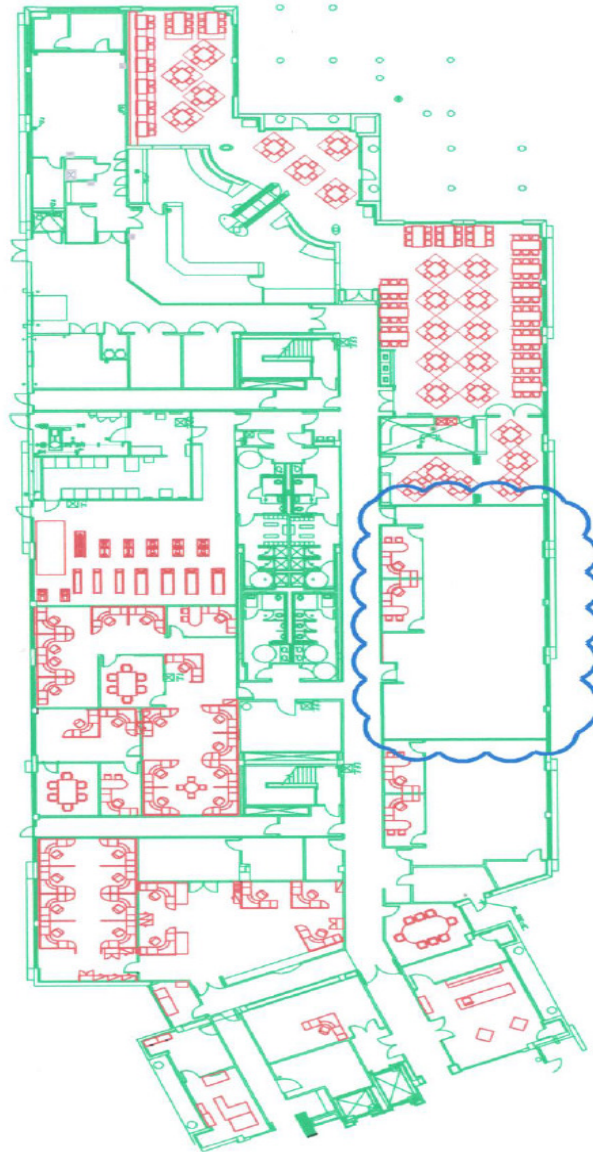
Koree Rivers
Morris SE Group
954.815.0878 Mobile
koreerivers@morrissegroup.com

Sharon Weber
UGL Services
404.504.5848
sharon.weber@na.ugllimited.com



2400 S.W. 145th Ave.
Miramar, FL 33027

1st Floor—2,570 SF
Available



For more information:

Ken Morris, SIOR
Morris SE Group
954.474.1776 ext. 303
954.240.4400 Mobile
kenmorris@morrissegroup.com

Lois Paskow, RPA
Morris SE Group
954.292.3232 Mobile
loispaskow@morrissegroup.com

Koree Rivers
Morris SE Group
954.815.0878 Mobile
koreerivers@morrissegroup.com

Sharon Weber
UGL Services
404.504.5848
sharon.weber@na.ugllimited.com



2400 S.W. 145th Ave.
Miramar, FL 33027

1st Floor—3,959 SF
Available—Data Center

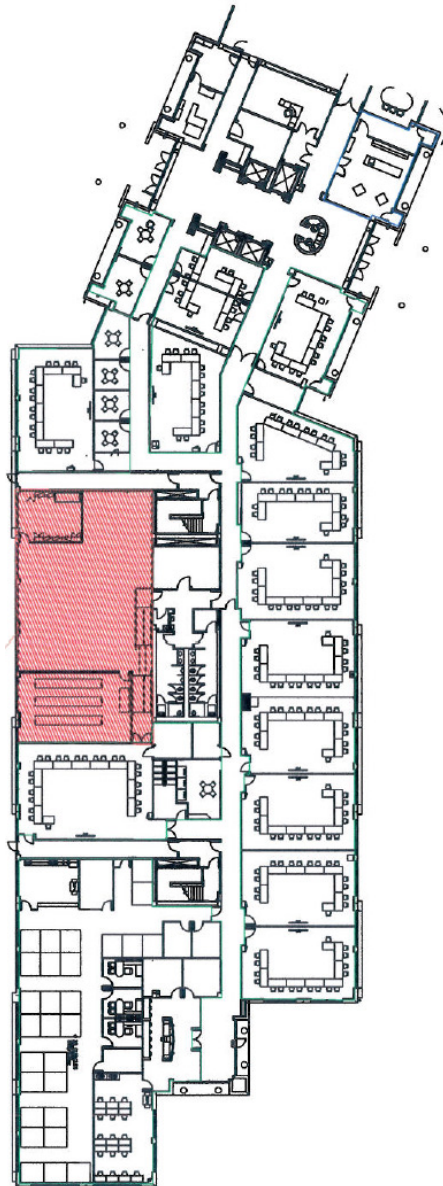
For more information:

Ken Morris, SIOR
Morris SE Group
954.474.1776 ext. 303
954.240.4400 Mobile
kenmorris@morrissegroup.com

Lois Paskow, RPA
Morris SE Group
954.292.3232 Mobile
loispaskow@morrissegroup.com

Koree Rivers
Morris SE Group
954.815.0878 Mobile
koreerivers@morrissegroup.com

Sharon Weber
UGL Services
404.504.5848
sharon.weber@na.ugl.com



Raised Floor Area
90 ft x 74 ft

Supplemental Power
2 (15 ton) cooling units

