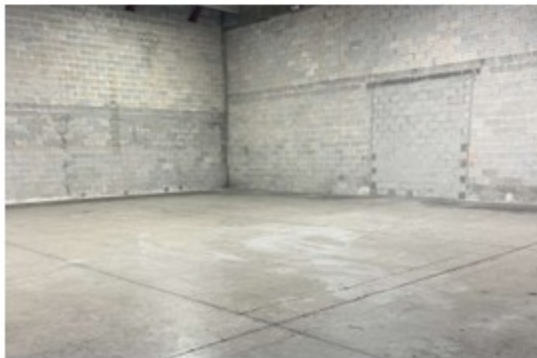
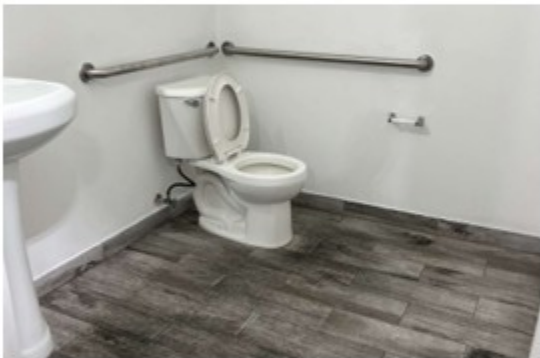
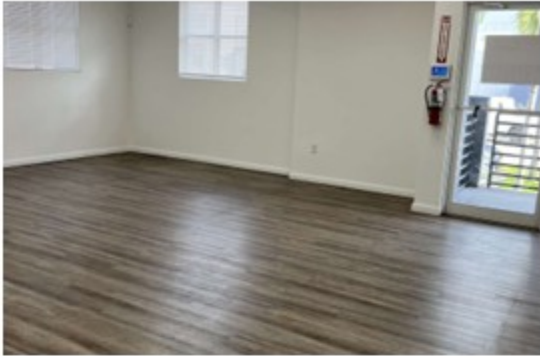


1)

5055 NW 74th Avenue, #3

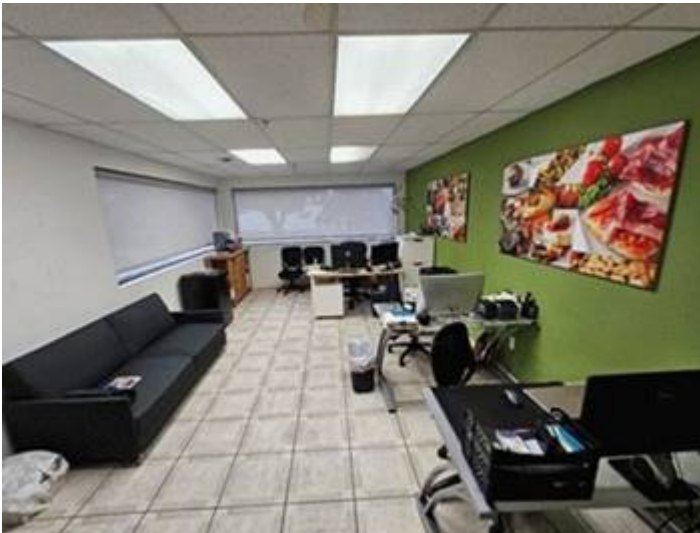
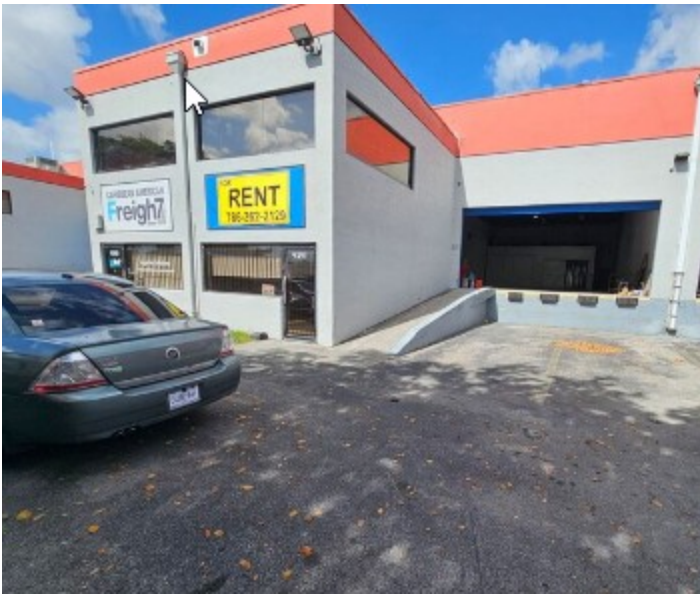
- 4,300 sf
- 850 sf office
- 2 docks
- 20' clear
- \$7,095 gross per month



2)

9391 NW 13th Street

- 4,400 sf
- 375 sf office
- 2 docks
- 22' clear
- 450 sf cooler
- \$7,480 gross per month



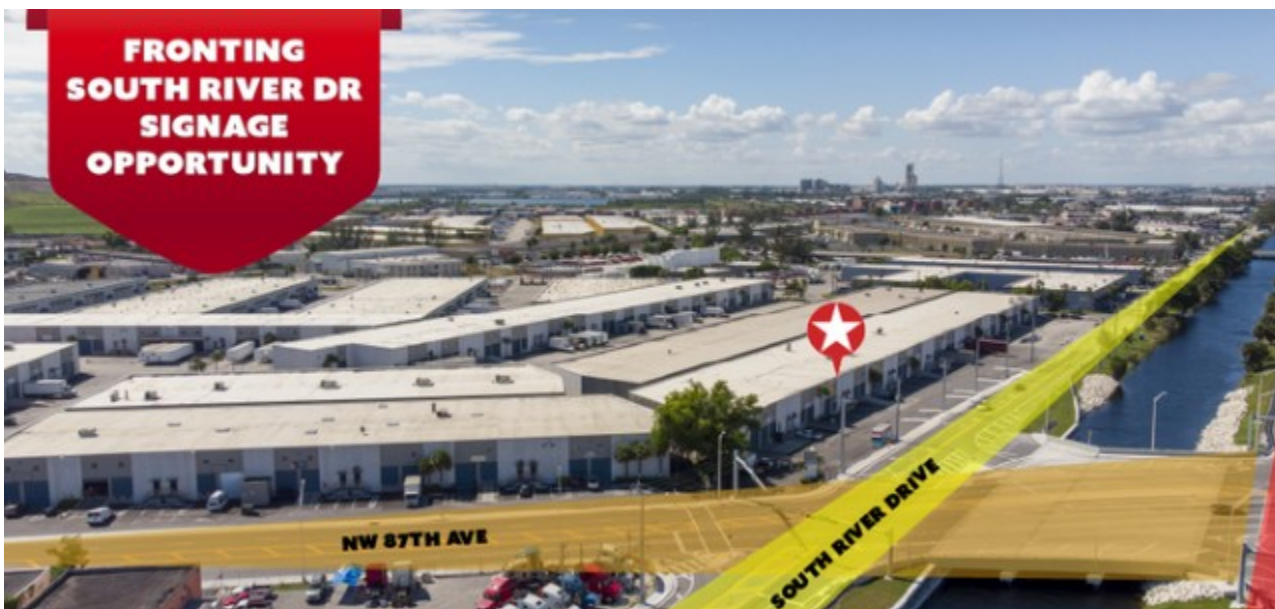
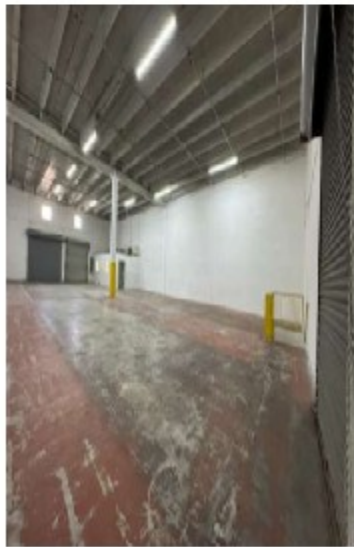




3)

10150 NW South River Drive

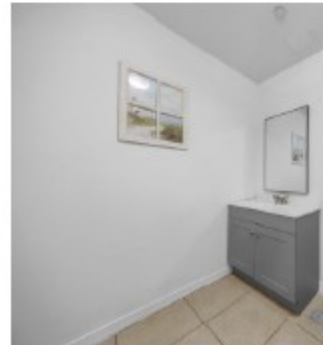
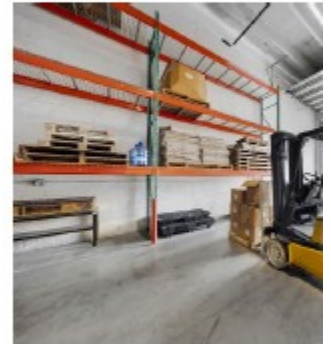
- 4,800 sf
- 350 sf office
- 1 docks
- 20' clear
- \$8,976 per month including OPEX

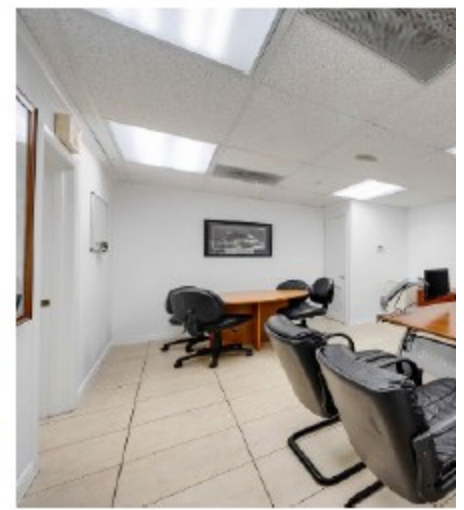
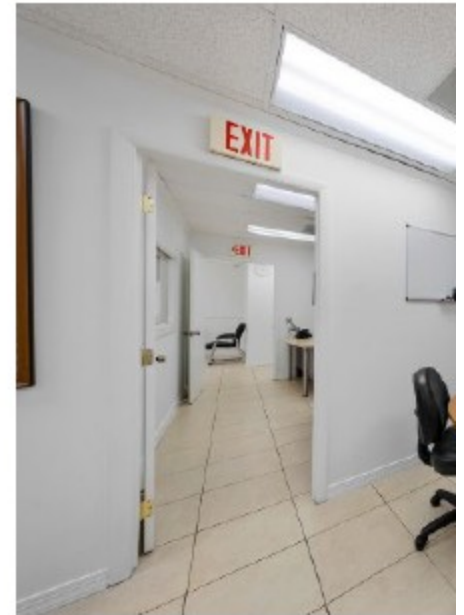
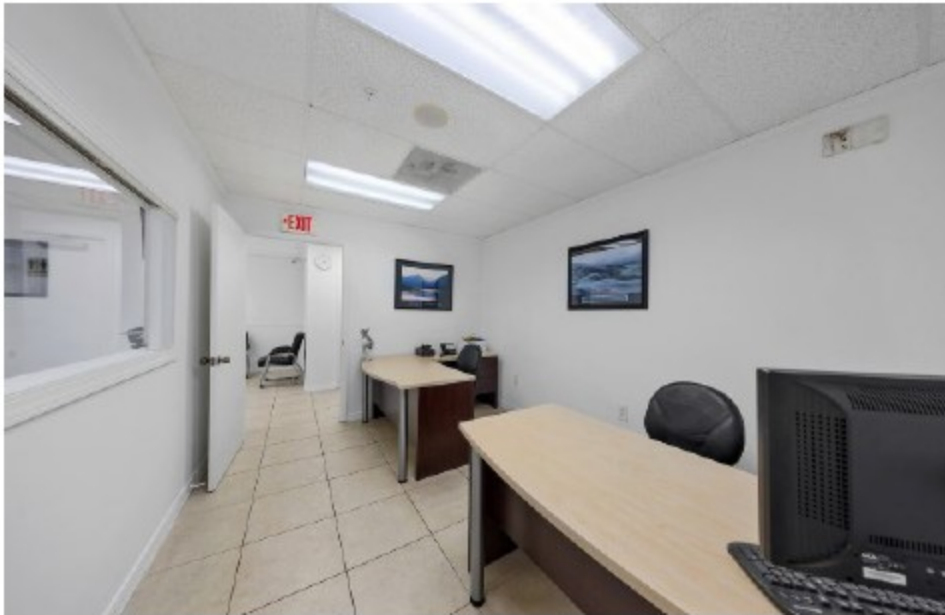
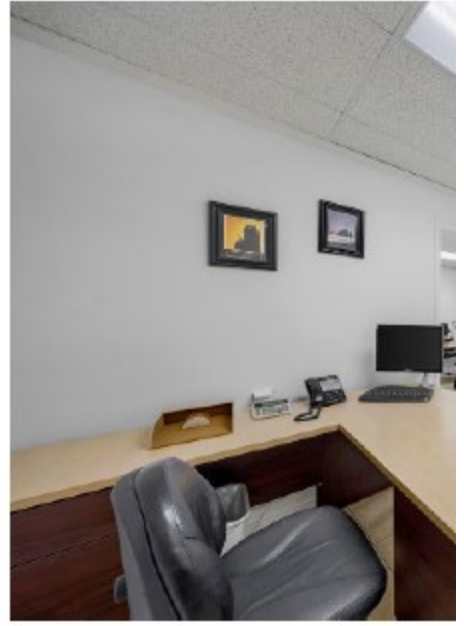


4)

10800 NW 21st Street

- 3,856 sf
- 650 sf office
- 1 dock
- 20' clear
- \$8,500 per month including OPEX





Jeffery Alan Turek
Vice President

REMAX Commercial & Investment Realty
450 Silver Spur Road
Rolling Hills Estates, California 90274
310-802-2545 (Office)
310-802-2546 (Fax)
BRE# 01260097



CONFIDENTIAL AND PRIVILEGED COMMUNICATION: This e-mail transmission, and any documents, files or previous e-mail messages attached to it, may contain confidential information that is legally privileged. If you are not the intended recipient, or person responsible for delivering it to the intended recipient, you are hereby notified that any disclosure, copying, distribution or use of any of the information contained in or attached to this message is STRICTLY PROHIBITED. Interception of e-mail is a crime under the Electronic Communications Privacy Act, 18 U.S.C. 2510-2521 and 2701-2709. If you have received this transmission in error, please notify me immediately by replying to this e-mail or by telephone at 310/802-2545, and destroy the original transmission and its attachments without reading them or saving them to disk. Thank you.